

PART OF THE NE.1/4, OF SEC. 27, T.6N., R.1W., S.L.B. & M.

# NOB HILL ADDITION

BLOCKS 46 & 47

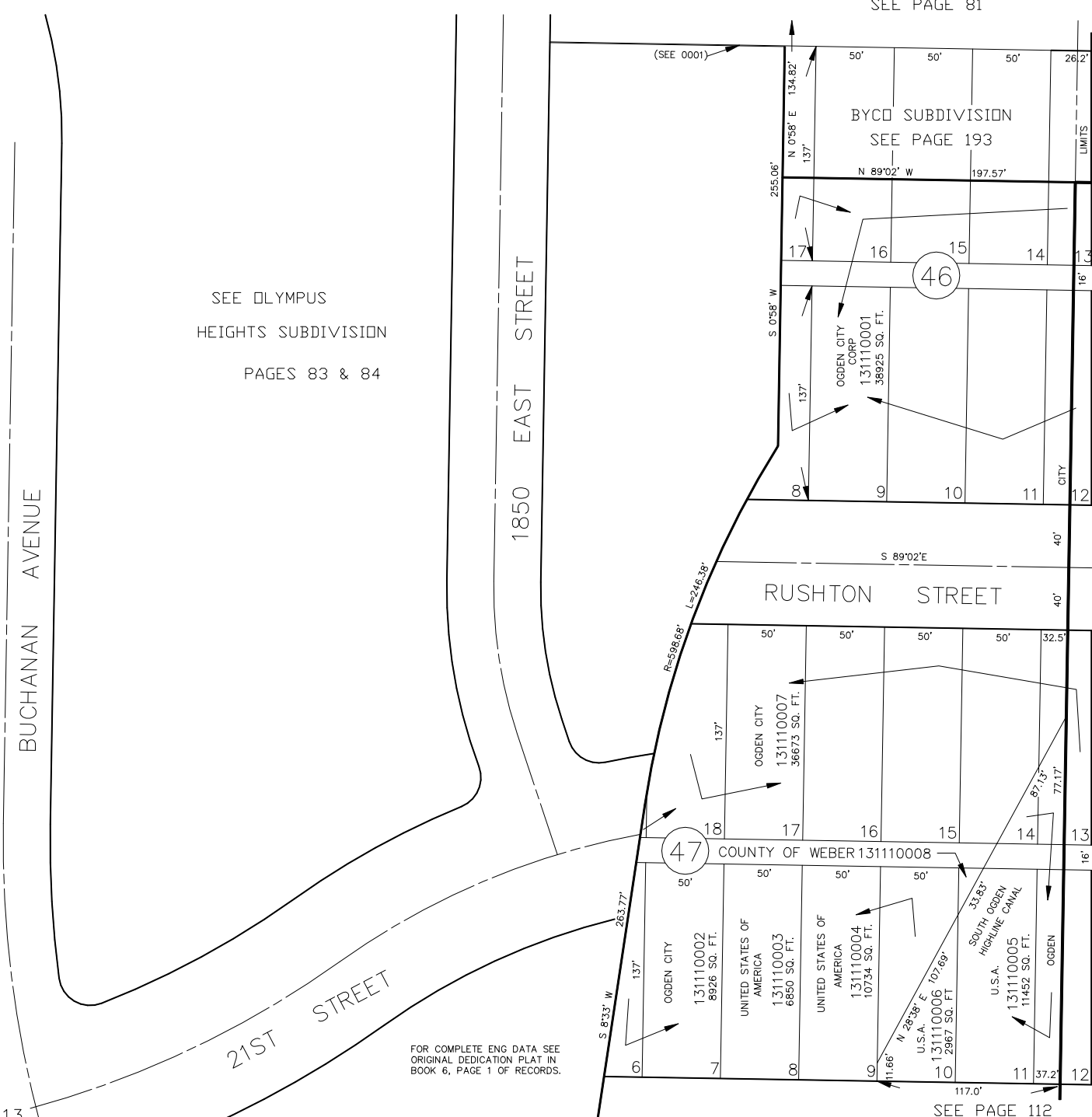
IN OGDEN CITY

SCALE 1" = 50'

TAXING UNIT: 25

SEE PAGE 81

SEE OLYMPUS  
HEIGHTS SUBDIVISION  
PAGES 83 & 84



SEE PAGE 79

FOR COMPLETE ENG DATA SEE  
ORIGINAL DEDICATION PLAT IN  
BOOK 6, PAGE 1 OF RECORDS.

SEE PAGE 112